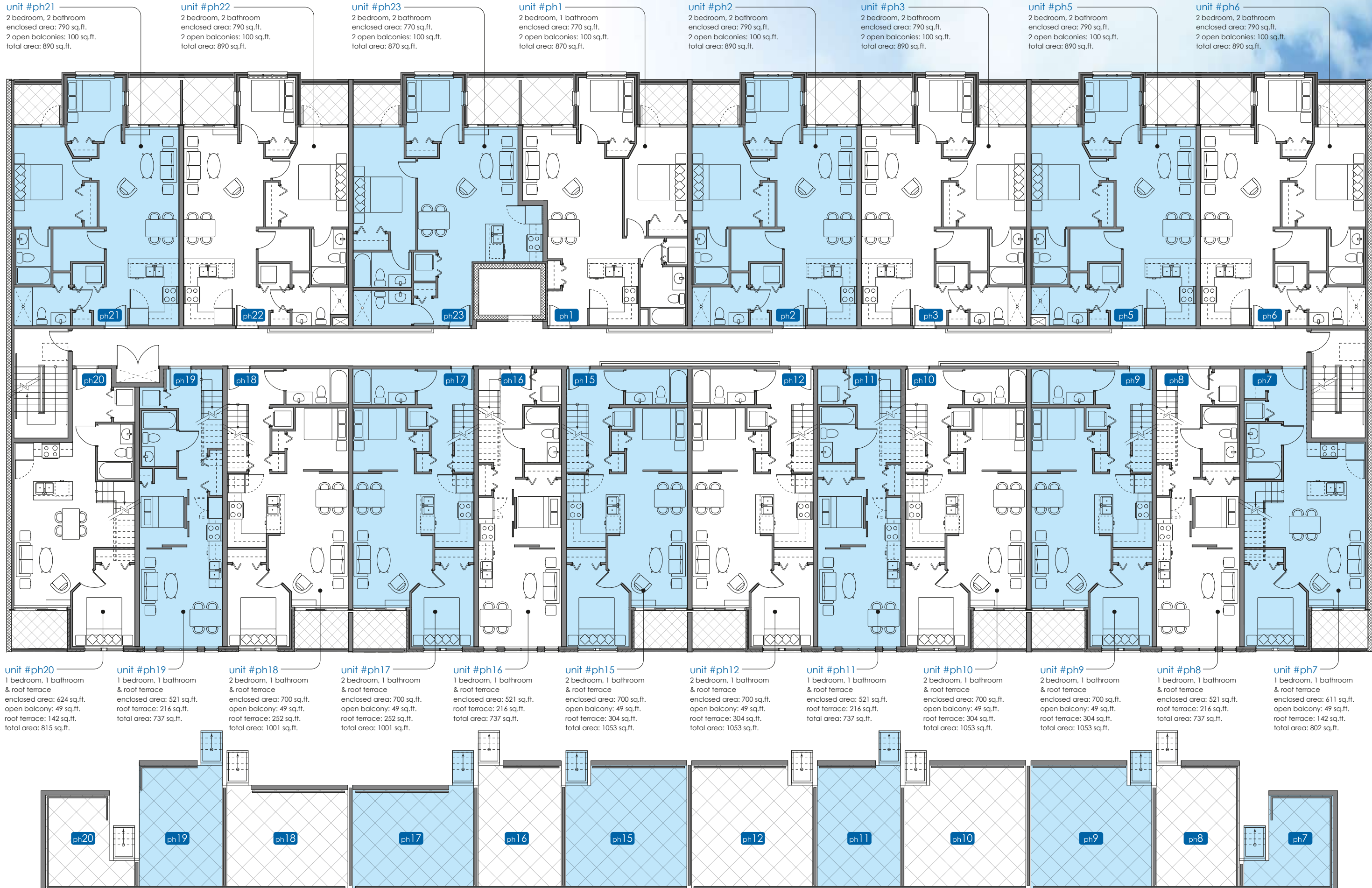


the view penthouse



unit #ph21
2 bedroom, 2 bathroom
enclosed area: 790 sq.ft.
2 open balconies: 100 sq.ft.
total area: 890 sq.ft.

unit #ph22
2 bedroom, 2 bathroom
enclosed area: 790 sq.ft.
2 open balconies: 100 sq.ft.
total area: 890 sq.ft.

unit #ph23
2 bedroom, 2 bathroom
enclosed area: 770 sq.ft.
2 open balconies: 100 sq.ft.
total area: 870 sq.ft.

unit #ph1
2 bedroom, 1 bathroom
enclosed area: 770 sq.ft.
2 open balconies: 100 sq.ft.
total area: 870 sq.ft.

unit #ph2
2 bedroom, 2 bathroom
enclosed area: 790 sq.ft.
2 open balconies: 100 sq.ft.
total area: 890 sq.ft.

unit #ph3
2 bedroom, 2 bathroom
enclosed area: 790 sq.ft.
2 open balconies: 100 sq.ft.
total area: 890 sq.ft.

unit #ph5
2 bedroom, 2 bathroom
enclosed area: 790 sq.ft.
2 open balconies: 100 sq.ft.
total area: 890 sq.ft.

unit #ph6
2 bedroom, 2 bathroom
enclosed area: 790 sq.ft.
2 open balconies: 100 sq.ft.
total area: 890 sq.ft.

unit #ph20
1 bedroom, 1 bathroom
& roof terrace
enclosed area: 624 sq.ft.
open balcony: 49 sq.ft.
roof terrace: 142 sq.ft.
total area: 815 sq.ft.

unit #ph19
1 bedroom, 1 bathroom
& roof terrace
enclosed area: 521 sq.ft.
open balcony: 49 sq.ft.
roof terrace: 216 sq.ft.
total area: 737 sq.ft.

unit #ph18
2 bedroom, 1 bathroom
& roof terrace
enclosed area: 700 sq.ft.
open balcony: 49 sq.ft.
roof terrace: 252 sq.ft.
total area: 1001 sq.ft.

unit #ph17
2 bedroom, 1 bathroom
& roof terrace
enclosed area: 700 sq.ft.
open balcony: 49 sq.ft.
roof terrace: 252 sq.ft.
total area: 1001 sq.ft.

unit #ph16
1 bedroom, 1 bathroom
& roof terrace
enclosed area: 521 sq.ft.
open balcony: 49 sq.ft.
roof terrace: 216 sq.ft.
total area: 737 sq.ft.

unit #ph15
2 bedroom, 1 bathroom
& roof terrace
enclosed area: 700 sq.ft.
open balcony: 49 sq.ft.
roof terrace: 304 sq.ft.
total area: 1053 sq.ft.

unit #ph12
2 bedroom, 1 bathroom
& roof terrace
enclosed area: 700 sq.ft.
open balcony: 49 sq.ft.
roof terrace: 304 sq.ft.
total area: 1053 sq.ft.

unit #ph11
1 bedroom, 1 bathroom
& roof terrace
enclosed area: 521 sq.ft.
open balcony: 49 sq.ft.
roof terrace: 216 sq.ft.
total area: 737 sq.ft.

unit #ph10
2 bedroom, 1 bathroom
& roof terrace
enclosed area: 700 sq.ft.
open balcony: 49 sq.ft.
roof terrace: 304 sq.ft.
total area: 1053 sq.ft.

unit #ph9
2 bedroom, 1 bathroom
& roof terrace
enclosed area: 700 sq.ft.
open balcony: 49 sq.ft.
roof terrace: 304 sq.ft.
total area: 1053 sq.ft.

unit #ph8
1 bedroom, 1 bathroom
& roof terrace
enclosed area: 521 sq.ft.
open balcony: 49 sq.ft.
roof terrace: 216 sq.ft.
total area: 737 sq.ft.

unit #ph7
1 bedroom, 1 bathroom
& roof terrace
enclosed area: 611 sq.ft.
open balcony: 49 sq.ft.
roof terrace: 142 sq.ft.
total area: 802 sq.ft.

In our continuing effort to meet the challenge of product improvement, we reserve the right to modify or change plans, specifications, and prices without notice. Renderings are artist's conceptions only. All floor areas are approximate. Deck, terrace and other outdoor areas and landscaping may change from the artist's conception and are intended as a general reference only. Not to scale.